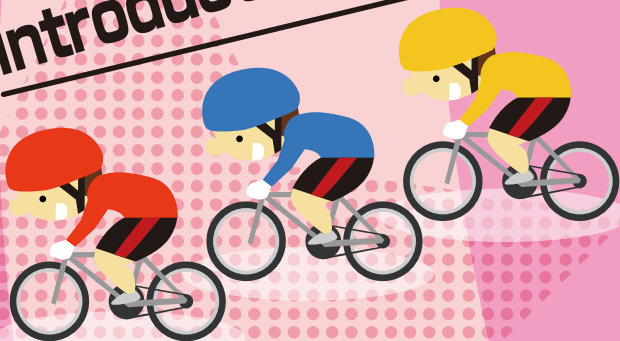


# KEIRIN

## Navigator

An easy to understand  
introduction to keirin



*The global sport  
from Japan*

**KEIRIN**



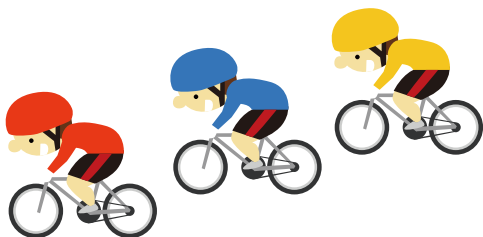
# Let's learn abo

## Keirin is a major global sport!

Keirin was first developed in Kyushu's Kokura Velodrome in 1948. Its dynamic races, reaching speeds of 70 km/h, and the fascinating deduction that goes on around the racers, has made it popular with many fans. Now an official Olympic sport, it is truly a global sport from Japan. By opening this KEIRIN Navigator, you've taken the first step to becoming a keirin fan yourself!



# ut keirin!



## Table of Contents

<b>What is keirin?</b> .....	<b>03</b>
<b>Overview of a race</b> .....	<b>05</b>
<b>The keirin course</b> .....	<b>07</b>
<b>Types of races</b> .....	<b>09</b>
<b>Major race winners (2020)</b> .....	<b>11</b>
<b>Major race winners (2019)</b> .....	<b>13</b>
<b>Girl's keirin special race winners</b> .....	<b>15</b>
<b>Keirin Q&amp;A</b> .....	<b>17</b>
<b>The keirin velodrome!</b> .....	<b>21</b>
<b>A wide range of wagers!</b> .....	<b>23</b>
<b>Learn how to read the odds!</b> .....	<b>25</b>
<b>Filling out your mark sheet is also important...</b>	<b>27</b>
<b>What are Dokanto multirace wagers?</b> .....	<b>29</b>
<b>The difference between Girl's Keirin and Men's Keirin...</b>	<b>31</b>
<b>Get to know the popular cyclists</b> .....	<b>33</b>
<b>The global sport from Japan!</b> .....	<b>35</b>
<b>Keirin velodromes around Japan</b> .....	<b>37</b>
<b>Off-track betting sites</b> .....	<b>41</b>
<b>How subsidy programs work</b> .....	<b>42</b>

# What is keirin?


## Learn about keirin uniforms!

Cyclists' uniforms and helmets are color coded for each bike number. Not only does this make them colorful and appealing, but it also makes it easy to see which cyclists are in which positions in races. Learn the colors and numbers!!

### Uniform

**9-cyclist race**



Bracket 1 

Bracket 2 

Bracket 3 

Bracket 4   


Bracket 5   


Bracket 6   



\*even in cases where one cyclist is missing to make it an 8-cyclist race (7-cyclist race), there is a bracket.

**7-cyclist race**

There are no brackets in 7-cyclist races

**Pacer**



These cyclists, on whom bets cannot be placed, block the wind and set the pace for the race.

## Cyclist shorts

Cyclists are divided into six ranks: SS, S1, S2, A1, A2, and A3. Of those, only nine are chosen for the SS rank; truly the elite of the elite! They race with the red shorts and are the object of everyone's admiration.

### 🌀 Number of cyclists per rank As of July 1, 2021

	Class	Rank	Number of cyclists
Men	S Class	Rank S	9
		Rank 1	211
		Rank 2	454
	A Class	Rank 1	516
		Rank 2	516
Rank 3		524	
Women	L Class	Rank 1	167
<b>Total</b>			<b>2,397</b>



SS rank cyclist shorts

### 🌀 Cyclist shorts



SS Class



S Class



A Class



# Overview of a r

## 🌀 Get an overview of a race!

Keirin races are qualification tournaments. Staying in the running until the final race on the last day of the tournament is a harsh challenge, not allowing cyclists to let their guard down for even a single day.

### START

Keirin races consist of 3 or 4 laps on a 500 meter track, 4 or 5 laps on a 400 meter track, or 5 or 6 laps on a 333.3 meter (335 meter) track. The cyclists, lined up on the starting block, begin at the sound of the gun. (For details, see the bottom of page 19)



### Lapping

During the initial laps, the cyclists work on their strategies behind a pacer, with cyclists from the same region forming lines trying to be in an advantageous position.



### One or two laps left

When there are one and a half laps left, a gong is struck, and the pace ramps up.





**GOAL!**

## Straightaway

The cyclists round the last curve and rush full-speed towards the goal to begin the final spurt, reaching speeds of 70 km/h!!



## Half a lap left

This is the highlight of the race. Each cyclist deploys their very best strategy, such as completely making a break or suddenly coming up from behind and passing on the outside.



**Gong**



# The keirin cour

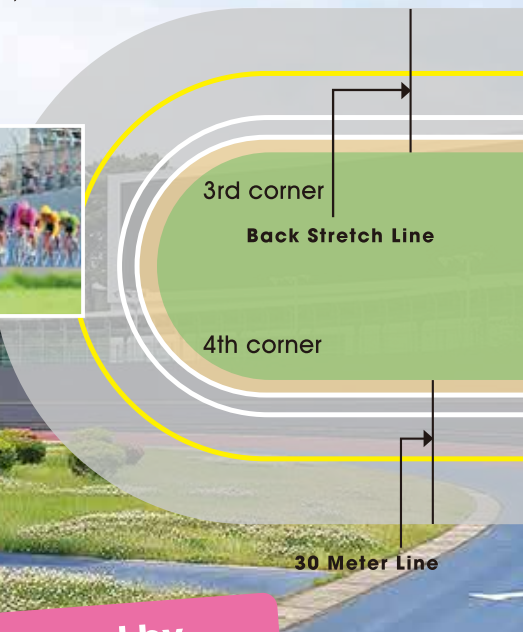
⊗ **A steeply sloped course that only a professional**

The course the cyclists race on is called a bank. Velodromes have differing track lengths: 333.3 meters (335 meters), 400 meters, and 500 meters.

The bank is steeply angled between the 1st and 2nd corners and between the 3rd and 4th corners to prevent cyclists moving at high speeds from being flung off the track by the centrifugal force. The angles vary from 25 to 35 degrees! Seen up close, the track looks almost like a wall.



※Read  
KEIRINGUIDE  
for a detailed  
explanation



**The racers used by professional cyclists are a world away from typical bicycles!**



**The bicycles used by KEIRIN cyclists are called racers, and are custom-made to fit each cyclist's body. They weigh roughly 7 kilograms, and have no brakes\*.**

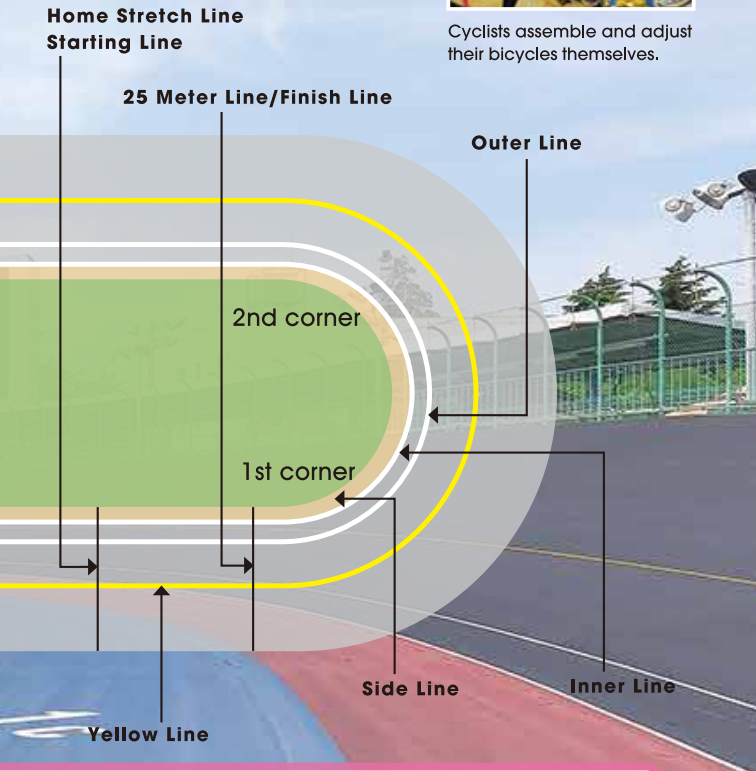
(\* When cyclists practice on public roads they use bicycles with brakes and observe all traffic rules.)



# cyclist can manage

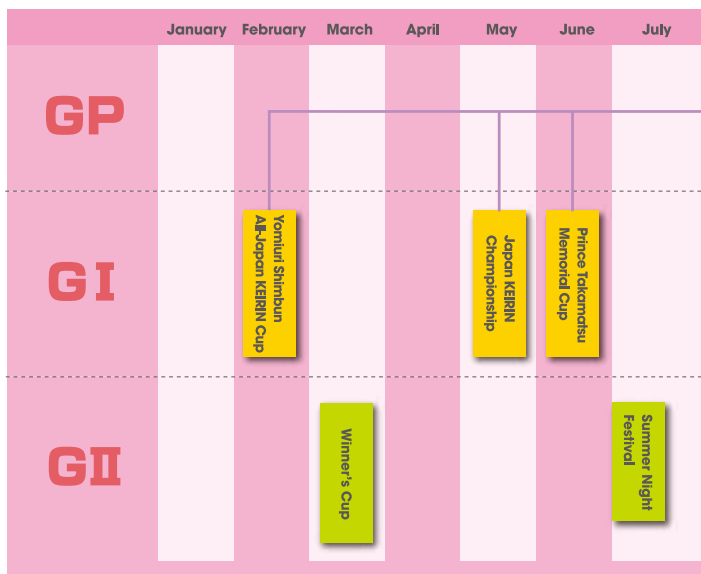


Cyclists assemble and adjust their bicycles themselves.

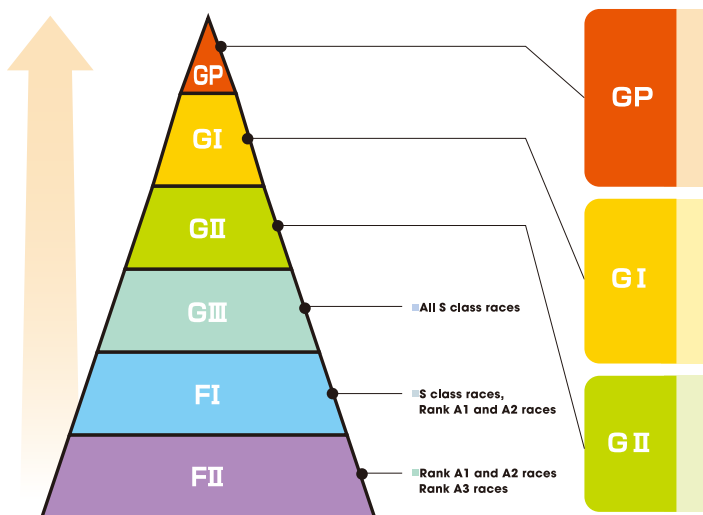


# Types of races

## Major races and priority competition rights



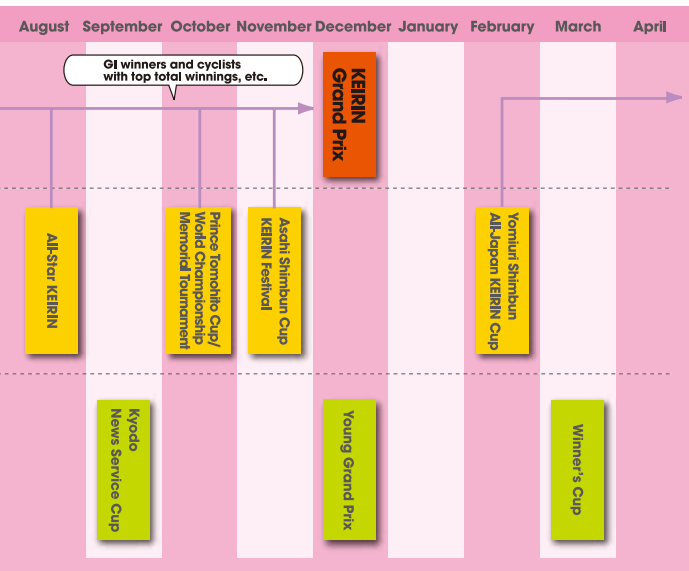
## Grade system



## Keirin's graded race system culminates in the Grand Prix.

Heated races are held year-round.

\* Priority competition rights are rights granted to those with top scores in GII races to compete in other GI and GII races.



### ● KEIRIN Grand Prix 1 race

**Championship Prize Money: 100 million yen.** The keirin world's biggest event, this race is held every year on December 30. This is a race consisting of the year's nine GI winners and cyclists with top total winnings, etc. Just as the name says, it is a race to determine the winner, the number one cyclist of the year.

- Japan KEIRIN Championship, All-Star KEIRIN, KEIRIN Festival 6-day event
- All-Japan KEIRIN Cup, Prince Takamatsu Memorial Cup, Prince Tomohito Cup/World Championship Memorial Tournament 4-day event

Open to the top S class cyclists.  
GI winners earn the right to race in the GP.

- Kyodo News Service Cup 4-day event
- Winner's Cup 4-day event
- Summer Night Festival 3-day event
- Young Grand Prix 1 race


Open to all S class cyclists.  
\*not including Young Grand Prix

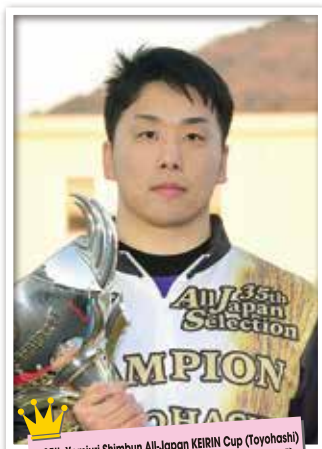


# Major race winners

(2020)



  
KEIRIN Grand Prix 2020 (Hiratsuka)  
Kentaro Wada (Chiba)  
87th graduating term



  
35th Yomiuri Shimbun All-Japan KEIRIN Cup (Toyohashi)  
Hiroto Shimizu (Yamaguchi)  
105th graduating term



  
71st Prince Takamatsu Memorial Cup GI (Wakayama)  
Yuuta Wakimoto (Fukui)  
94th graduating term

\*The 74th Japan KEIRIN Championship (Shizuoka) was cancelled due to the COVID-19 pandemic



63rd All-Star KEIRIN GI (Nagoya)  
**Yuuji Matsuura**  
(Hiroshima)  
98th graduating term



29th Prince Tomohito Cup/World Championship  
Memorial Tournament GI (Maebashi)  
**Yuuta Wakimoto (Fukui)**  
94th graduating term



62nd Asahi Shimbun Cup KEIRIN Festival GI (Kokura)  
**Kohei Gunji (Kanagawa)**  
99th graduating term



16th Summer Night Festival GII (Iwaki-Taira)  
**Hiroto Shimizu (Yamagichi)**  
105th graduating term



4th Winner's Cup (Fukui)  
**Yuuji Matsuura (Hiroshima)**  
98th graduating term



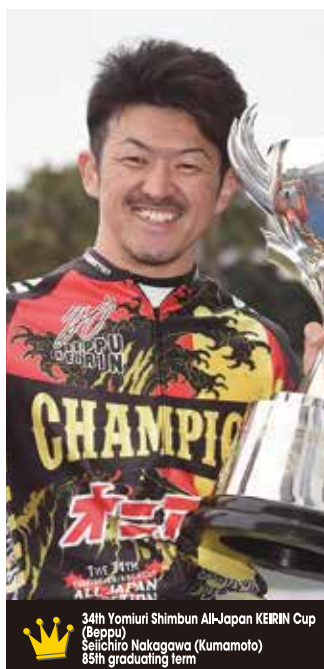
36th Kyodo News Service Cup GII (Ito)  
**Shohei Nakamoto (Kumamoto)**  
97th graduating term

# Major race winners



KEIRIN Grand Prix 2019 (Tachikawa)

Shintaro Sato (Fukushima)  
78th graduating term



34th Yomiuri Shimbun All-Japan KEIRIN Cup  
(Beppu)  
Seiichiro Nakagawa (Kumamoto)  
85th graduating term



The 73rd Japan KEIRIN Championship  
(Matsudo)  
Yuuta Wakimoto (Fukui)  
94th graduating term

# (2019)



70th Prince Takamatsu Memorial Cup GI (Kishiwada)  
Seichiro Nakagawa (Kumamoto)  
85th graduating term



62nd All-Star KEIRIN GI (Nagoya)  
Yuudai Nitta (Hukushima)  
90th graduating term



28th Prince Tomohito Cup/World Championship Memorial Tournament GI (Maebashi)  
Hiroyuki Murakami (Kyoto) 86th graduating term



61st Asahi Shimbun Cup KEIRIN Festival GI (Kokura)  
Yuuji Matsuura (Hiroshima)  
98th graduating term



3rd Winner's Cup (Ogaki)  
Yuuta Wakimoto (Fukui)  
94th graduating term



15th Summer Night Festival GI (Beppu)  
Hiroyuki Murakami (Kyoto)  
86th graduating term



35th Kyodo News Service Cup GI (Matsusaka)  
Kohei Gunji (Kanagawa)  
99th graduating term

# Girl's Keirin special race



Girls Grand Prix 2020 (Hiratsuka)

Aoi Kodama (Fukuoka) 108 th graduating term



Girl's Dream Race (Nagoya)

Takako Ishii (Chiba) 106 th graduating term



Artemis Award (Nagoya)

Fuuko Umekawa (Tokyo) 112 th graduating term

# winners (2020)



Girl's Keirin Collection (Fukui)

Aoi Kodama (Fukuoka) 108 th graduating term



Girl's Keirin Collection (Ito)

Makibi Takagi (Tokyo) 106 th graduating term



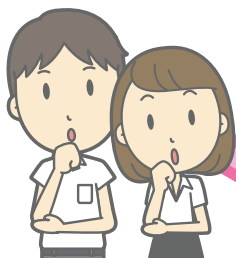
Girl's Keirin Festival (Iwaki-Taira)

Makibi Takagi (Tokyo) 106 th graduating term

# Keirin Q&A



People are often puzzled when they first encounter keirin. In this section, we provide answers to frequently asked questions.



Q

When are keirin races held?

A

There are races almost every day!

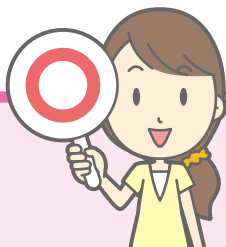
There are races held almost every day, including during the obon festival and year end season, in the 43 velodromes across Japan. Check the keirin portal site, KEIRIN.JP, for details. In addition to the normal event times (from 10:00 a.m. to 5:00 p.m.), there are also morning keirin races, nighttime keirin races, and late night keirin races to fit customer lifestyles. Even if fans can't make it to the velodrome, they can watch races on live broadcast or catch up with highlights through KEIRIN.JP. (You can access the site via the QR code on the back of this program)



A

Early morning keirin

These morning keirin races are held earlier than standard races. The first race starts at 8:30 a.m. at the earliest, and around 9:00 a.m. at the latest, and while the last race time varies by velodrome, races are generally finished before 2:00 p.m. Races start early in the morning, so after the morning races are finished, you can watch the regularly scheduled races, night races, and late night races for a full day of keirin fun. Morning keirin can also be watched on-site.



## A Night keirin

The first race of night keirin begins after 3:00 p.m., and the last race ends before 8:00 p.m. Since the first night keirin was held at the Hakodate Velodrome in July 1998, more velodromes have installed lighting systems, and the number of night keirin events has increased. Seeing the cyclists riding under the lights is a spectacular sight and holds a special appeal as something different from regular keirin races. Fans can stop at the velodrome on the way home from work and watch a race with a beer in hand.



## A Late night keirin

There are still races after the night races! In late night keirin, which began in Kokura in January 2011, the first race starts around 9:00 p.m., and the last race starts around 11:30 p.m. These 7-cyclist races are run behind closed doors. The purchase of wagers is carried out via internet only. At some off-track betting sites wagers can only be placed in advance. Also, starting from October 1, 2020, cyclists will line up in order of their race scores starting from number one in an indication of their strength, making it easier for beginners to make predictions. The greatest draw of late night keirin is the way it ends the day with a bang.



# Keirin Q&A



**Q**

Which rules are applied as Keirin?  
7-cyclist race?  
9-cyclist race?

**A**

There are both type of races

GIRL'S KEIRIN began in July of 2012, with intense battles taking place at velodromes across Japan. The rules and equipment used vary from men's keirin, and the 7-cyclist format is also different, as men's keirin is run in 9-cyclist races with late night keirin featuring 7-cyclist races. Also, with the current COVID-19 pandemic, FI and FII races are held as 7-cyclist races to prevent the spread of COVID-19. With fewer cyclists, the races can be easier to enjoy.

**Q**

Who is the person that starts out in front?



**A**

That's the pacer!

When the starting gun sounds, one cyclist rides in front. Officially called the lead cyclist, this pacer, on whom betting is not possible, sets the pace for the race and serves as a windbreak. The pacer is a local keirin cyclist. Cyclists are not allowed to overtake the leader until there are two laps remaining in the 400m bank, two and a half laps remaining in the 333.3m bank, and one and a half laps remaining in the 500m bank. If any cyclist passes the pacer before that time they will be disqualified and stripped of their finishing position.



**Q**

Why don't the cyclists start out at full speed?



**A**

It's a battle against the wind!

If a cyclist were to start out at full speed, he or she would encounter strong wind resistance, which would provide a tremendous advantage to other cyclists who rode in his/her slipstream. This is why the position of pacer (see the previous answer) was created. The cyclists now look for their optimal timing to make a move. While the cyclists may look like they're going slow at the start of the race, they're moving at speeds of 30 to 40 km/h.

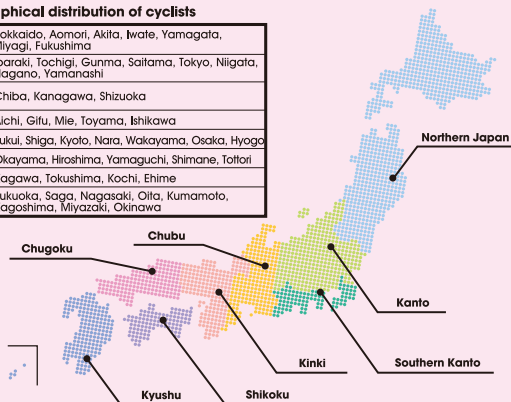
**A**

They're making lines

Even with the pacer acting as a windbreak, wind is a tremendous obstacle when cyclists decide to make their moves. The cyclists therefore form groups of two to four, with cyclists who want to go in front even if it means cutting through the wind (usually younger cyclists) taking the lead, followed by cyclists who have fast finishing speeds. These are called lines. Lines are formed by cyclists from the same or nearby areas, classmates from Japan Institute of KEIRIN (formerly Keirin School), and the like. Lines are very important, and for that reason predictions are often made based on which cyclists form the line in addition to the cyclists' race scores that normally reflect their relative strength.

● Geographical distribution of cyclists

<b>Northern Japan</b>	Hokkaido, Aomori, Akita, Iwate, Yamagata, Miyagi, Fukushima
<b>Kanto</b>	Ibaraki, Tochigi, Gunma, Saitama, Tokyo, Niigata, Nagano, Yamanashi
<b>Southern Kanto</b>	Chiba, Kanagawa, Shizuoka
<b>Chubu</b>	Aichi, Gifu, Mie, Toyama, Ishikawa
<b>Kinki</b>	Fukui, Shiga, Kyoto, Nara, Wakayama, Osaka, Hyogo
<b>Chugoku</b>	Okayama, Hiroshima, Yamaguchi, Shimane, Tottori
<b>Shikoku</b>	Kagawa, Tokushima, Kochi, Ehime
<b>Kyushu</b>	Fukuoka, Saga, Nagasaki, Oita, Kumamoto, Kagoshima, Miyazaki, Okinawa



# The keirin velodrome!

🌀 As fun as an amusement park!

Although it varies by velodrome, there are usually stands located along the banks. These stands have special viewing seats, restaurants, kiosks, event stages, and more, so the whole family can enjoy a full day at the velodrome. During major races there are often large-scale events going on as well.



Race screen

Kiosk

Backstretch

Back stand

Kanto Mon Gate (Racers Gate)



Cyclists enter the banks.



Some velodromes even have kids' rooms.

Explanations about how to fill out mark sheets and make predictions

Beginner's information corner



Reserved seats, roughly 500 to 2,000 yen

Special viewing seats (Main stands)



Enter through the coin gates. (Entry generally costs 50 yen or 100 yen. Entry to some velodromes is free.)



There are also cloakrooms and information counters.

# Wide range of w

 Heated races that can make dreams come true

Slow and steady type?

Big win dreamer?

The betting tickets at keirin races are called “shaken.” Wagers can be purchased for 100 yen each. There are a wide range of wagers. Let’s look at the seven types of wagers.

For example,

in a certain race

1st place <b>5</b> Cyclist	4 Bracket	2nd place <b>3</b> Cyclist	3 Bracket	3rd place <b>2</b> Cyclist	2 Bracket
----------------------------	-----------	----------------------------	-----------	----------------------------	-----------

The following wagers would be winners given these results.

		7-cyclist race	9-cyclist race	see P3
<b>Bracket quinella</b>	1st and 2nd place brackets in either order	Not sold	Probability of winning 1/18	3 - 4
<b>Bracket perfecta</b>	1st and 2nd place brackets in correct order	Not sold	Probability of winning 1/33	4 → 3
<b>Quinella</b>	1st and 2nd place finishers in either order	Probability of winning 1/21	Probability of winning 1/36	3 - 5
<b>Perfecta</b>	1st and 2nd place finishers in correct order	Probability of winning 1/42	Probability of winning 1/72	5 → 3
<b>Trio</b>	1st, 2nd and 3rd place finishers in any order	Probability of winning 1/35	Probability of winning 1/84	2 - 3 - 5
<b>Trifecta</b>	1st, 2nd and 3rd place finishers in correct order	Probability of winning 1/210	Probability of winning 1/504	5 → 3 → 2
<b>Quinella place (“wide”)</b>	1st and 2nd place finishers in either order	Probability of winning 3/21	Probability of winning 3/36	3 - 5 2 - 5 2 - 3

As a general rule the greater the odds the lower the prize money and the lesser the odds the greater the prize money.

## Perfecta trifecta and quinella trio

**Perfecta Trifecta**

The placing cyclists must be predicted in the correct order.

**Quinella Trio**

The placing cyclists must be predicted correctly, but the order does not matter.

[Ex.] <1st place> Cyclist **7**, <2nd place> Cyclist **2**

[Perfecta] **7** → **2** winning wager! (**2** - **7** would not be a winning wager)

[Quinella] **2** - **7** winning wager!

\* For a quinella place (“wide”) wager there are three winning patterns: the two cyclists come in 1st and 2nd, 1st and 3rd, or 2nd and 3rd.



- \* Minors are prohibited by law from purchasing betting tickets.
- \* Winners may be required by law to file a tax return.
- \* Winnings must be claimed within 60 days.

## How to read the betting ticket

The name of the velodrome for which the wager has been placed

Race title

Race number and date

Wager type

Wager combination

Wager amount

## Sample betting tickets

東京オーヴァル 京王閣

東京ミリオンナイトレース

12レース 3年7月2日

3年度4回1日

主催 東京都十一市組合 10

49300660009 0062

0006430715 34277

0534 8712 4831 2

京王閣競輪場

合計★★★★5枚券★★★★500円

3連単

4	1	8	☆☆☆	100円
7	2	4	☆☆☆	100円
7	4	2	☆☆☆	100円
3	4	5	☆☆☆	100円
1	4	8	☆☆☆	100円

Trifecta

東京オーヴァル 京王閣

東京ミリオンナイトレース

12レース 3年7月2日

3年度4回1日

主催 東京都十一市組合 10

49300550004 0062

0030810715 34276

0534 8712 4811 6

京王閣競輪場

合計★★★★4枚券★★★★400円

2車複

1-4	☆☆☆	100円
2-4	☆☆☆	100円
2-7	☆☆☆	100円
2-3	☆☆☆	100円

Quinella

# Learn how to re

 The odds indicate the expected payout of the wager

The odds show how much you would get if your race wager was a winning wager. Shown below is the kind of “odds sheet” often shown on the TVs at the velodrome or on live shows on KEIRIN.JP.

1 立川		2 10R		3 2車単オッズ		4 締切		5 8分前	
1 高木 隆弘		2 伏見 俊昭		3 佐々木 廉也		4 岡部 芳幸		5 大掛 崇宗	
2	72.9	1	72.9	1	72.9	1	72.9	1	72.9
3	47.2	3	47.2	2	47.2	2	47.2	2	47.2
4	57.7	4	57.7	4	57.7	3	57.7	3	57.7
5	78.9	5	78.9	5	78.9	5	78.9	4	78.9
6	96.1	6	96.1	6	96.1	6	96.1	6	96.1
7	83.3	7	83.3	7	83.3	7	83.3	7	83.3
8	26.0	8	26.0	8	26.0	8	26.0	8	26.0
9	25.7	9	25.7	9	25.7	9	25.7	9	25.7
6 渡辺 雄樹		7 郡司 盛夫		8 小橋 正義		9 太田 真一		合計 24113	
1	72.9	1	72.9	1	72.9	1	72.9	返還 0	
2	47.2	2	47.2	2	47.2	2	47.2	差引 24113	
3	57.7	3	57.7	3	57.7	3	57.7		
4	78.9	4	78.9	4	78.9	4	78.9		
5	96.1	5	96.1	5	83.3	5	96.1		
7	83.3	6	26.0	6	26.0	6	83.3		
8	26.0	8	25.7	7	25.7	7	26.0		
9	25.7	9	26.7	8	26.7	8	25.7		

- The velodrome at which the race is held
- Race number
- Which wager type the displayed odds are for
- The amount of time until betting is closed
- The odds of wagers for Cyclist 1 and each other cyclist.
- The total amount of wagers placed, at 100 yen = 1 wager.
- The number of cancelled wagers.
- The number of wagers minus the number of cancelled wagers. This is reflected in the odds.



# ad the odds!

## Start gathering information here!

There are various types from the simple to the very complex. Having a lot of information at hand can help predict the outcome.

### ■ Race card

Race cards are member cards issued by race organizers containing basic information such as cyclists' names, brackets, numbers, gear ratios, and race scores. They are available for free in velodromes.



### ■ Sports newspapers

Sports newspapers are the easiest to obtain and most familiar sources of keirin information. Sports newspapers publish which cyclists that will take part in races that day, as well as predictions and comments.

### ■ Specialist papers

Available in velodromes and station kiosks and convenience stores near velodromes, these papers contain detailed information about the races that will be held at the velodrome that day.

\*These can be bought from the multipurpose copy machines in convenience stores in Japan.



### ■ KEIRIN.JP keirin portal site

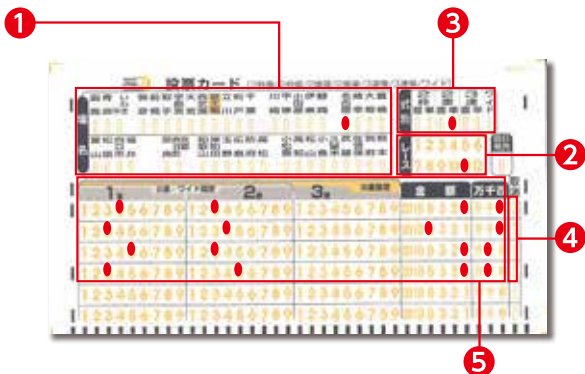
This portal site is packed with keirin information. It features race information, keirin news, access to voting sites, and more! It has also launched an official KEIRIN Point system (user registration required). Points are accrued based on wager purchase amounts and can be used to enter drawings for fabulous prizes like TVs and video game systems, as well as keirin merchandise.



# Filling out your mark sheet is a

 **To purchase a betting ticket, you need to fill out a mark sheet!**

To purchase your betting ticket, just fill out all the required information in the mark sheet and bring it to the betting window.



- 1** Select whether you are betting in the velodrome, at an off-track betting site, or one day in advance.
- 2** Select the number of the race you wish to bet on.
- 3** Select the type of wager you wish to make. (In this example, a perfecta)
- 4** You can check this area if you have made a mistake and wish to cancel the entered information.
- 5** Select your predictions and how much you wish to bet.



## Formation

Formation wagers allow the purchase of wagers with a selection of multiple bike numbers (brackets) for each finishing order. Even if there are many bike numbers (brackets) to choose from, you can purchase all of the possible combinations.

## Box

In box betting, you place wagers on all combinations of your selections.



Trifecta formation



Trifecta box

# Also important!

## You can place wagers outside of velodromes as well!

You can place wagers even if there are no velodromes nearby or if you are too busy to go to the velodrome.

### Off-track betting sites

There are over 70 off-track betting sites across Japan. There's bound to be one near you! (See P41)



### Internet wagers

**KNB** Keirin Net Bank service

Telephone wager members can use the convenient "Internet Wager" service. Internet wagers can be placed quickly not only from your home computer, but from smartphones or mobile phones as well, while checking race cards and odds.

*Placing internet wagers via computer, smartphone, or mobile phone*

**Fast! Easy! Convenient!**



### [Supported banks]

 PayPay 銀行  Rakuten 楽天銀行  ゆうちょ銀行

 SMBC 三井住友銀行

 MUFG  
三菱UFJ銀行

 NEOBANK  
住信SBIネット銀行

Telephone wager placement center

Hours / 9:00 a.m. to 8:00 p.m.

Toll-free number



**0120-319634**



# What are Dokanto wagers?

Dokanto! is a multi-race wager that can only be placed on the need to predict winners, so even those who know little about keirin the lottery. You could win up to 1.2 billion yen off a single 200 yen



## ● Dokanto! 7 – 7 race winner wager

This quick pick wager doesn't require winner predictions – all wagers are automatically selected by computer. Win by getting all the 1st place winners of the last seven races. (Chance of winning: 1 in roughly 4,780,000)

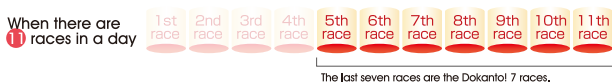
### 1 If all 1st place winners in the races match, you win!



Match all the 1st place winners in the seven races and...



### 2 Applies to the last seven races



## You could strike it rich! Check for carryovers!

If there are no winners for bets placed on one day, or if no winning betting ticket holders claim their winnings, the winnings for the day will be carried over to the next race day. This is called a carryover. The maximum Dokanto! winnings are up to 1.2 billion yen. Let's look at some big winners of the past.

Win amount  
Up to **1.2 billion** yen!!



## Betting tickets can be purchased on the internet!

- KEIRIN.JP (<https://keirin.jp>)
- Kdreams (<https://www.kdreams.jp>)
- Chariloto (<https://www.chariloto.com>)
- Odds Park (<https://www.oddspark.com/loto/>)
- WINTICKET (<https://www.winticket.jp/>)

# okanto multirace

- \* Minors are prohibited by law from purchasing betting tickets.
- \* Winners may be required by law to file a tax return.

internet. Wagers are placed automatically by a computer, with no can take part easily via their computer or smartphone, like playing bet!! Why not try your hand at a big win with Dokanto!?

## How to place a wager 2 **Dokanto! 4 two**

### ● Dokanto! 4 two wager

This quick pick wager doesn't require winner predictions – all wagers are automatically selected by computer. Win by getting all the 1st and 2nd place winners of the last four races.

(Chance of winning: 1 in roughly 1,680,000)

**1** If all 1st and 2nd place winners in the races match (in either order), you win!

Match all the 1st and 2nd place winners (in either order) in the four races and...

**2** Applies to the last four races

When there are 12 races in a day

1st race	2nd race	3rd race	4th race	5th race	6th race	7th race	8th race	9th race	10th race	11th race	12th race
----------	----------	----------	----------	----------	----------	----------	----------	----------	-----------	-----------	-----------

The last four races are the Dokanto! 4 two races.

When there are 11 races in a day

1st race	2nd race	3rd race	4th race	5th race	6th race	7th race	8th race	9th race	10th race	11th race
----------	----------	----------	----------	----------	----------	----------	----------	----------	-----------	-----------

The last four races are the Dokanto! 4 two races.

## Highest ever winning amounts

### Dokanto! 7

- 484,266,440 yen (August 30, 2014, Toyama)
- 358,182,440 yen (March 29, 2019, Kokura)
- 316,304,840 yen (December 18, 2019, Wakayama)

### Dokanto! 4 two

- 194,403,740 yen (October 7, 2012, Kishiwada)
- 192,563,840 yen (February 2019, Wakayama)
- 165,553,040 yen (September 24, 2017, Aomori) ※As of July 1, 2021

That's a large number of people who have won over 100 million yen. Carryover information is always posted on the KEIRIN.JP top page, so don't miss your big chance!

Buy from the followingsites (URLs).

\*In addition to the Dokanto! betting tickets introduced here, individual velodromes also offer their own multirace wagers. See KEIRIN.JP for more details.

# The difference Girl's Keirin and

Because the rules are different for men and women cyclists, the keirin uses, Girl's Keirin rules incorporate more international rules adopted as an Olympic sport for the London Olympics, and the rules world stage. Let's take a look at exactly how the rules differ.

## The bicycles are different!

What is unique about Girl's Keirin is the colorful bicycles with different rear wheels (disc wheels) that the Girl's Keirin cyclists use. Also different is that Girls' Keirin bicycle frames are made of carbon while men's keirin bicycles use chromoly steel, etc.



Girl's Keirin bicycle



Men's Keirin bicycle

# between Men's Keirin

two groups do not compete together. Compared to the rules Men's and criteria. The reason for this is that women's keirin was officially were made such that Girl's Keirin cyclists could be competitive on the

## The pacer starts from a different position!

In Men's keirin, the lead cyclist, called the pacer, leads the cyclists from the front. However with international rules, the pacer starts from half a lap behind and when they cross the starting line the starting gun sounds to begin the race.



## Lines are different!

There is one more major different between men's and Girl's Keirin. In Men's keirin, "line" formations are an essential part of the competition (see page 20 for an explanation of lines). In Girl's Keirin it is an individual battle. From start to finish it is clear who is winning and who is losing, making Girl's Keirin easy to understand and follow.



# Get to know the

Popularity voting of cyclists is held for All-Star KEIRIN in every August.

## The result of 64th All-Star KEIRIN Fan vote

Rank 1st



**Kota Hirahara** (Saitama·87th graduating term)

Born on June 11th, 1982  
8th consecutive, total 11th appearance of KEIRIN Grand Prix  
Rank 1st at All-Star KEIRIN Fan vote in 2021

Rank 2nd



**Yuuji Matsuura** (Hiroshima·98th graduating term)

Born on November 21th, 1990  
Winner of Japan KEIRIN Championship on May, 2021  
Valuable Cyclist Award in 2019, 2020

Rank 3rd



**Yuuta Wakimoto** (Fukui·94th graduating term)

Born on March 21th, 1982  
Winner of Prince Tomohito Cup/World Championship Memorial  
Tournament on October, 2020  
Participation in 2020 Tokyo Olympics

Rank 4th



**Kohei Gunji** (Kanagawa·99th graduating term)

Born on September 4th, 1990  
Winner of Yomiuri Shimbun All-Japan KEIRIN Cup on February, 2021  
Valuable Cyclist Award in 2020

Rank 5th



**Hiroto Shimizu** (Yamaguchi·105th graduating term)

Born on November 9th, 1994  
Winner of Winner's Cup on March, 2021  
Special Fighting-Spirit Award in 2018-2020

Rank 6th



**Yuudai Nitta** (Fukushima·90th graduating term)

Born on January 25th, 1986  
Winner of All-Star KEIRIN on August, 2019  
Participation in 2020 Tokyo Olympics

Rank 7th



**Shintaro Sato** (Fukushima·78th graduating term)

Born on November 7th, 1976  
Winner KEIRIN Grand Prix 2019  
Most Valuable Cyclist in 2019

Rank 8th



**Tomohiro Fukaya** (Shizuoka·96th graduating term)

Born on January 3th, 1990  
Belonging to National Team and succeeding  
International Award in 2019

Rank 9th



**Futoshi Morisawa** (Akita·96th graduating term)

Born on July 20th, 1985  
Participation in KEIRIN Grand Prix for the first time, ranked  
8th in the Prize Ranking 2020

Rank 10th



**Kentaro Wada** (Chiba·87th graduating term)

Born on May 27th, 1981  
Winner KEIRIN Grand Prix 2020

# popular cyclists

Let's look at popular cyclists.

## The result of Girl's KEIRIN Popularity Contest in 2021

Rank 1st



**Aoi Kodama** (Fukuoka·108th graduating term)

Born on May 8th, 1995  
Winner of Girl's Grand Prix in 2018-2020  
Most Valuable Girl's Cyclist in 2018-2020  
Ranked No.1 by Fan vote for the 5 years running

Rank 2nd



**Makibi Takagi** (Tokyo·106th graduating term)

Born on August 17th, 1994  
Winner of Girl's Keirin Collection in Ito Onsen Stage  
Winner of Girl's Keirin Festival on July, 2020  
Valuable Girl's Cyclist Award in 2020

Rank 3rd



**Hiroko Ishii** (Tokyo·104th graduating term)

Born on January 9th, 1986  
Winner of Girl's Dream Race on August, 2019  
Achieved in a total of 400 wins in 2021  
Valuable Girl's Cyclist Award in 2018-2019

Rank 4th



**Yuuka Kobayashi** (Fukuoka·106th graduating term)

Born on January 18th, 1994  
Winner of Girl's Keirin Collection 2019 in Ogaki Stage  
Winner of Girl's Keirin Collection 2018 in Matsuyama Stage  
Participation in 2020 Tokyo Olympics

Rank 5th



**Takako Ishii** (Chiba·106th graduating term)

Born on February 17th, 1990  
Winner of Girl's Dream Race on August, 2020  
Winner of Girl's Keirin Festival on July, 2019  
Winner of Girl's Keirin Collection 2018 in Hiratsuka Stage

Rank 6th



**Hikari Arakawa** (Ibaraki·110th graduating term)

Born on December 24th, 1994  
Participation in Artemis Award in 2019  
Used to do Track and Field in high school

Rank 7th



**Riyu Ota** (Saitama·112th graduating term)

Born on August 17th, 1994  
Belonging to National Team and succeeding  
Selected for protein's TV ad from 2020  
International Award in 2019

Rank 8th



**Sakura Yamahara** (Kochi·104th graduating term)

Born on December 11th, 1992  
Achieved in a total of 300 wins in 2019  
Used to do Bicycle racing in high school

Rank 9th



**Mina Sato** (Kanagawa·114th graduating term)

Born on December 7th, 1998  
Winner of Girl's Keirin Collection 2021 in Keiokaku Stage  
Belonging to National Team and succeeding

Rank 10th



**Fuuko Umekawa** (Tokyo·112th graduating term)

Born on March 1th, 1991  
Winner of Artemis Award in 2020  
Valuable Girl's Cyclist Award in 2020

# The global sport

One of the most famous international accomplishments of a sprint titles (from 1977 to 1986) in the UCI World Championships. amateur cyclists from the Atlanta Olympic Games in 1996,

## Olympic medals won


### 1996 Atlanta Olympics

 **Takanobu Jumonji**  
(Ibaraki, 75th graduating term)

1 km time trial – Bronze medal



### 2004 Athens Olympics

 **Tomohiro Nagatsuka**  
(Ibaraki, 81st graduating term)  
**Toshiaki Fushimi**  
(Fukushima, 75th graduating term)  
**Masaki Inoue**  
(Nagasaki, 86th graduating term)

Team sprint – Silver medal



### 2008 Beijing Olympics

 **Kiyofumi Nagai**  
(Gifu, 88th graduating term)

Keirin – Bronze medal



©PHOTO KISHIMOTO

# from Japan!

keirin cyclist was Koichi Nakano's winning of 10 consecutive  
Cycling sports were opened to both professional and  
allowing professional keirin cyclists to compete in the Olympics.

## Cyclists competing in the 2020 Tokyo Olympic

Their goal is to take Japan's first Olympic gold medal in the event.  
These are the cyclists competing in the 2020 Tokyo Olympics.



**Yuuta Wakimoto**  
(Men's Keirin, Men's Sprint)



**Yuudai Nitta**  
(Men's Keirin, Men's Sprint)



**Eiya Hashimoto**  
(Men's Omnium)



**Yuuka Kobayashi**  
(Women's Keirin, Women's Sprint)

©More CADENCE (morecadence.jp)

# Keirin velodrom around Japan

See **KEIRIN.JP** for details.

\* As of July 1, 2021

## Kanto

### **4** Yahiko Velodrome

2621 Oaza Yahiko, Yahiko Village, Nishikanbara District, Niigata Prefecture

### **5** Maebashi Velodrome

1-2-1 Iwagamimachi, Maebashi City, Gunma Prefecture

### **6** Utsunomiya Velodrome

1-2-7 Higashitomatsuri, Utsunomiya City, Tochigi Prefecture

### **7** Toride Velodrome

6-2-8 Hakusan, Toride City, Ibaraki Prefecture

### **8** Omiya Velodrome

Omiya Park, 4 Takahana-cho, Saitama City, Saitama Prefecture

### **9** Seibuen Velodrome

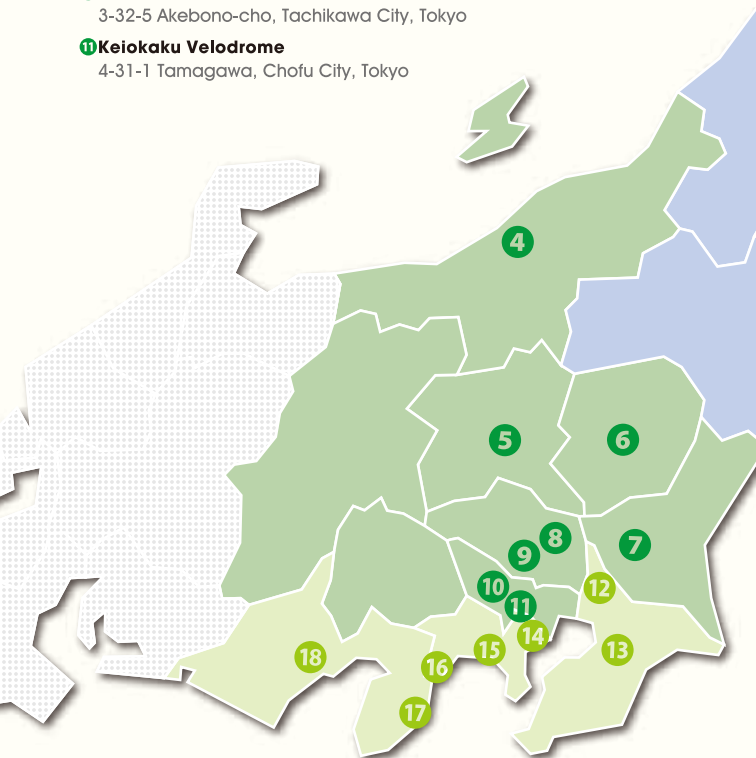
1215 Arahata, Tokorozawa City, Saitama Prefecture

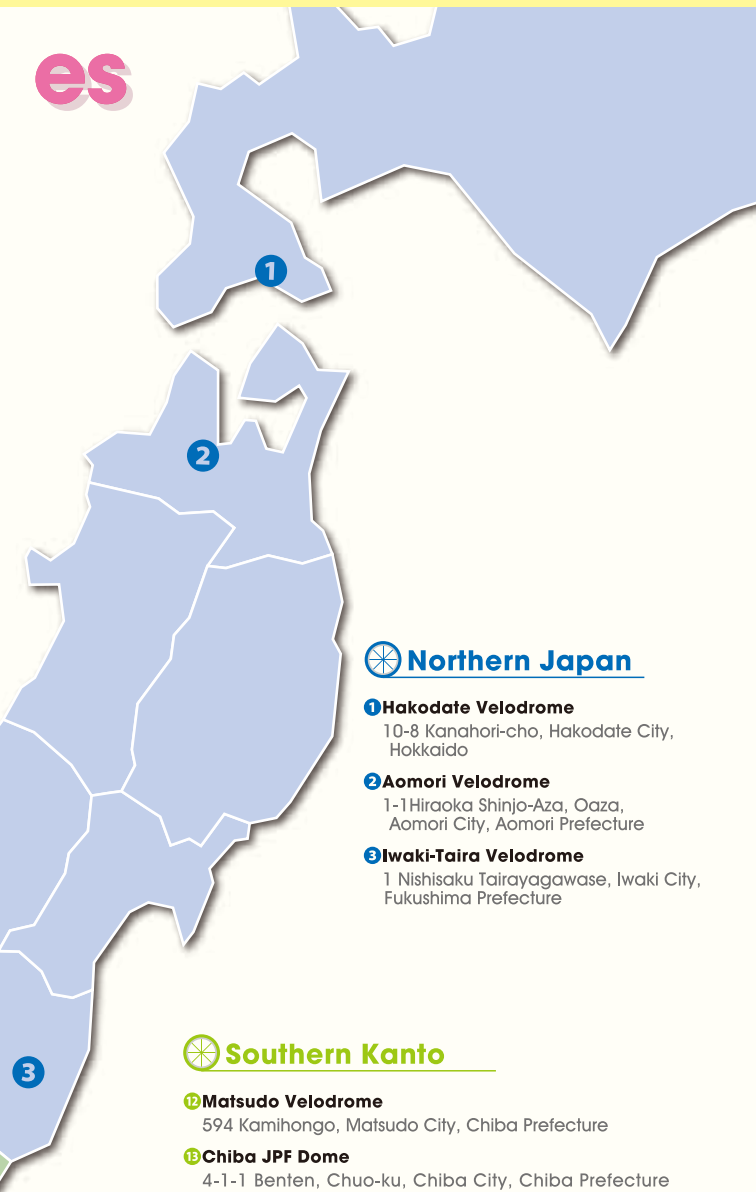
### **10** Tachikawa Velodrome

3-32-5 Akebono-cho, Tachikawa City, Tokyo

### **11** Keiokaku Velodrome

4-31-1 Tamagawa, Chofu City, Tokyo





## Northern Japan

- 1 Hakodate Velodrome**  
10-8 Kanahori-cho, Hakodate City, Hokkaido
- 2 Aomori Velodrome**  
1-1 Hiraoka Shinjo-Aza, Oaza, Aomori City, Aomori Prefecture
- 3 Iwaki-Taira Velodrome**  
1 Nishisaku Tairayagawase, Iwaki City, Fukushima Prefecture

## Southern Kanto

- 12 Matsudo Velodrome**  
594 Kamihongo, Matsudo City, Chiba Prefecture
- 13 Chiba JPF Dome**  
4-1-1 Bentei, Chuo-ku, Chiba City, Chiba Prefecture
- 14 Kawasaki Velodrome**  
2-1-6 Fujimi, Kawasaki-ku, Kawasaki City, Kanagawa Prefecture
- 15 Hiratsuka Velodrome**  
5-1 Kuryozutsumi, Hiratsuka City, Kanagawa Prefecture
- 16 Odawara Velodrome**  
4-10-1 Shiroyama, Odawara City, Kanagawa Prefecture
- 17 Ito Onsen Velodrome**  
1280 Oka, Ito City, Shizuoka Prefecture
- 18 Shizuoka Velodrome**  
2-9-1 Oshika, Suruga-ku, Shizuoka City, Shizuoka Prefecture

## Shikoku

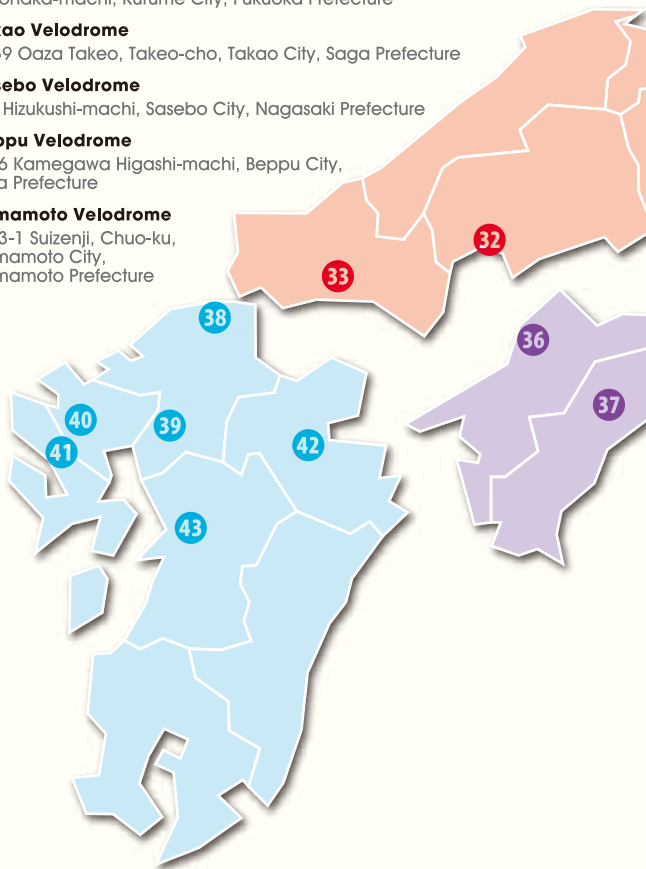
- 34 Takamatsu Velodrome**  
1-4-46 Fukuoka-cho, Takamatsu City,  
Kagawa Prefecture
- 35 Komatsushima Velodrome**  
5-57 Yokosu-cho, Komatsushima City,  
Tokushima Prefecture
- 36 Matsuyama Velodrome**  
796-6 Ichitsubo Nishi-machi,  
Matsuyama City, Ehime Prefecture
- 37 Kochi Velodrome**  
45 Oohara-cho, Kochi City,  
Kochi Prefecture

## Chugoku

- 31 Tamano Velodrome**  
5-18-1 Chikko, Tamano City,  
Okayama Prefecture
- 32 Hiroshima Velodrome**  
3-6-40 Ujinakaigan, Minami-ku,  
Hiroshima City, Hiroshima Prefecture
- 33 Hofu Velodrome**  
8-2 Kokubunji-cho, Hofu City,  
Yamaguchi Prefecture

## Kyushu

- 38 Kokura Velodrome**  
3-1-1 Mihagino, Kokurakita-ku, Kitakyushu City, Fukuoka Prefecture
- 39 Kurume Velodrome**  
2 Nonaka-machi, Kurume City, Fukuoka Prefecture
- 40 Takao Velodrome**  
4439 Oaza Takeo, Takeo-cho, Takao City, Saga Prefecture
- 41 Sasebo Velodrome**  
2-5 Hizukushi-machi, Sasebo City, Nagasaki Prefecture
- 42 Beppu Velodrome**  
1-36 Kamegawa Higashi-machi, Beppu City,  
Oita Prefecture
- 43 Kumamoto Velodrome**  
5-23-1 Suizenji, Chuo-ku,  
Kumamoto City, Kumamoto Prefecture



## Kinki

### 26 Fukui Velodrome

2-65 Akari-cho, Fukui City, Fukui Prefecture

### 27 Kyoto Mukomachi Velodrome

5 Nishinodan, Terado-cho, Muko City,  
Kyoto Prefecture

### 28 Nara Velodrome

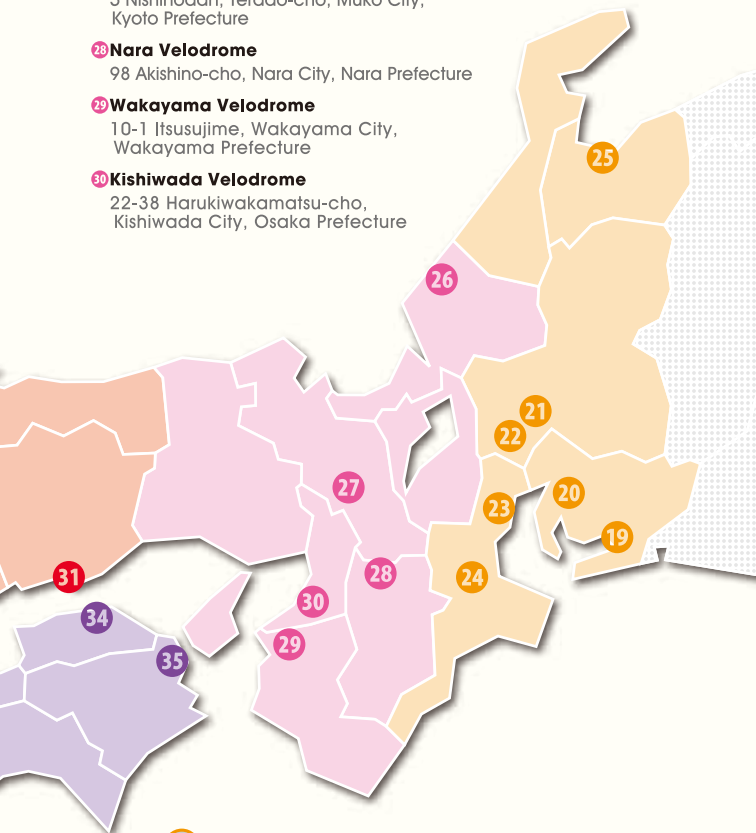
98 Akishino-cho, Nara City, Nara Prefecture

### 29 Wakayama Velodrome

10-1 Itsusujime, Wakayama City,  
Wakayama Prefecture

### 30 Kishiwada Velodrome

22-38 Harukiwakamatsu-cho,  
Kishiwada City, Osaka Prefecture



## Chubu

### 19 Toyohashi Velodrome

87 Azumada-cho, Toyohashi City, Aichi Prefecture

### 20 Nagoya Velodrome

68 Takabata Nakamura-cho-aza, Nakamura-ku,  
Nagoya City, Aichi Prefecture

### 21 Gifu Velodrome

5-16-1 Toei-cho, Gifu City, Gifu Prefecture

### 22 Ogaki Velodrome

1-1 Sanae-cho, Ogaki City, Gifu Prefecture

### 23 Yokkaichi Velodrome

5163 Oaza Hazuko, Yokkaichi City, Mie Prefecture

### 24 Matsusaka Velodrome

3-1 Kasuga-cho, Matsusaka City, Mie Prefecture

### 25 Toyama Velodrome

8-2 Iwaseikeda-machi, Toyama City, Toyama Prefecture

# Off-track betting sites

\* As of July 1, 2021

You can place wagers outside of velodromes as well by using off-track betting sites.

## Northern Japan

- 1 Satellite Ishikari  
Ishikari City, Hokkaido
  - 2 Satellite Sapporo  
Sapporo City, Hokkaido
  - 3 Satellite Matsukaze  
Hakodate City, Hokkaido
  - 4 Aomori Maauri Service Center  
Aomori City, Aomori Prefecture
  - 5 Satellite Rokunohe  
Rokunohe-cho, Kamikita District,  
Aomori Prefecture
  - 6 Fujisaki Off-Track  
Fujisaki-machi, Minamitsugaru District,  
Aomori Prefecture
  - 7 Satellite Oga  
Oga City, Akita Prefecture
  - 8 Satellite Rokugo  
Misato Town, Semboku District,  
Akita Prefecture
  - 9 Satellite Ishidoriya  
Hanamaki City, Iwate Prefecture
  - 10 Satellite Taiwa  
Taiwa Town, Kurokawa District,  
Miyagi Prefecture
  - 11 Satellite Miyagi  
Murata Town, Shibata District,  
Miyagi Prefecture
  - 12 Satellite Kashima  
Minamisoma City, Fukushima Prefecture
  - 13 Satellite Fukushima  
Fukushima City, Fukushima Prefecture
  - 14 Satellite Aizu  
Kitakata City, Fukushima Prefecture
  - 15 Satellite Adatara  
Nihonmatsu City, Fukushima Prefecture
  - 16 Koriyama Off-Track  
Koriyama City, Fukushima Prefecture
- ## Kanto
- 17 Satellite Niigata  
Niigata City, Niigata Prefecture
  - 18 Satellite Chuetsu  
Nagaoka City, Niigata Prefecture
  - 19 Satellite Myoko  
Myoko City, Niigata Prefecture
  - 20 Maebashi Keirin Tone Nishi Maauri  
Service Center  
Maebashi City, Gunma Prefecture
  - 21 Satellite Maebashi  
Maebashi City, Gunma Prefecture
  - 22 TOTOR Revolution Dome Tatebayashi  
(outside of Tatebayashi)  
Tatebayashi City, Gunma Prefecture
  - 23 Satellite Mito  
Shirosato Town, Higashiibaraki District,  
Ibaraki Prefecture
  - 24 Satellite Shiosai Kashima  
Kashima City, Ibaraki Prefecture
  - 25 La Pista Shimbashi (members-only)  
Minato-ku, Tokyo
  - 26 Satellite Futaba  
Kai City, Yamanashi Prefecture
  - 27 Satellite Shinshu Chikuma  
Chikuma City, Nagano Prefecture  
(Set to open late September, 2021)

## Southern Kanto

- 28 Satellite Narita  
Shibayama Town, Sanbu District,  
Chiba Prefecture
- 29 Satellite Funabashi  
Funabashi City, Chiba Prefecture
- 30 Satellite Ichihara  
Ichihara City, Chiba Prefecture
- 31 Satellite Yokohama (members-only)  
Yokohama City, Kanagawa Prefecture

## Chubu

- 32 Satellite Nagoya (members-only)  
Nagoya City, Aichi Prefecture
- 33 Satellite Ichinomiya  
Ichinomiya City, Aichi Prefecture
- 34 Kawagoe Off-Track  
Kawagoe Town, Mie District,  
Mie Prefecture

## Kinki

- 35 Satellite Konan  
Konan City, Shiga Prefecture
- 36 Satellite Osaka (members-only)  
Chuo-ku, Osaka, Osaka Prefecture
- 37 Satellite Hanshin  
Miki City, Hyogo Prefecture
- 38 Satellite Himeji  
Himeji City, Hyogo Prefecture

## Chugoku

- 39 Satellite Tsuyama  
Tsuyama City, Okayama Prefecture
- 40 Satellite Kasaoka  
Kasaoka City, Okayama Prefecture
- 41 Satellite San'in  
Matsue City, Shimane Prefecture
- 42 Satellite San'yo  
Mihara City, Hiroshima Prefecture
- 43 Hofu Ekimae Service Center  
Hofu City, Yamaguchi Prefecture
- 44 Satellite Ube  
Ube City, Yamaguchi Prefecture

## Shikoku

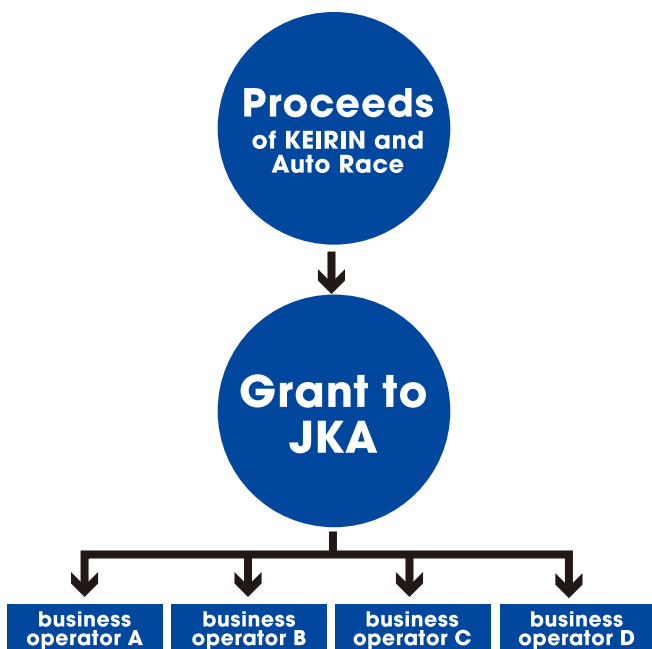
- 45 Satellite Kanonji  
Kanonji City, Kagawa Prefecture
- 46 Satellite Kamojima  
Yoshinogawa City, Tokushima Prefecture
- 47 Satellite Tokushima  
Tokushima City, Tokushima Prefecture
- 48 Satellite Seiyo  
Seiyo City, Ehime Prefecture
- 49 Nibancho Maauri Service Center  
Matsuyama City, Ehime Prefecture
- 50 Satellite Komatsu  
Saijo City, Ehime Prefecture
- 51 Satellite Nankoku  
Nankoku City, Kochi Prefecture
- 52 Satellite Yasuda  
Yasuda Town, Aki District, Kochi Prefecture

## Kyushu

- 53 Satellite Wakamatsu  
Kitakyushu City, Fukuoka Prefecture
- 54 Satellite Kitakyushu  
Izuka City, Fukuoka Prefecture
- 55 Satellite Nakasu (members-only)  
Fukuoka City, Fukuoka Prefecture
- 56 Satellite Kurume  
Kurume City, Fukuoka Prefecture
- 57 Satellite Usa  
Usa City, Oita Prefecture
- 58 Satellite Takao  
Takao City, Saga Prefecture
- 59 Satellite Kumamoto Shin-Shigai  
Kumamoto City, Kumamoto Prefecture
- 60 Satellite Uto  
Uto City, Kumamoto Prefecture
- 61 Satellite Yatsushiro  
Yatsushiro City, Kumamoto Prefecture
- 62 Satellite Kadokawa  
Kadogawa Town, Higashiusuki District,  
Miyazaki Prefecture
- 63 Satellite Miyazaki  
Miyazaki City, Miyazaki Prefecture
- 64 Satellite Mimata  
Mimata Town, Kitamorokata District,  
Miyazaki Prefecture
- 65 Satellite Mizobe  
Kirishima City, Kagoshima Prefecture
- 66 Satellite Akune  
Akune City, Kagoshima Prefecture
- 67 Satellite Satsumasendai  
Satsumasendai City,  
Kagoshima Prefecture
- 68 Satellite Kagoshima  
Kagoshima City, Kagoshima Prefecture
- 69 Satellite Kimotsuki  
Kimotsuki Town, Kimotsuki District,  
Kagoshima Prefecture

# How subsidy programs work

Keirin and Auto Race use a portion of their sales to support activities benefitting society like manufacturing, sports, and community development.



JKA provides subsidies so that business operators can take the initiative in promoting their projects.

## Public interest incorporated foundation - Fukui Health Management Association

A truck for medical checkups featuring a state-of-the-art digital mammography system has been introduced. Residents of 17 cities and towns throughout Fukui Prefecture, as well as those who work in small businesses, can now receive more accurate medical examinations, which will lead to early detection and treatment of breast cancer.



*The global sport  
from Japan*



Published by the JKA Foundation

Revised July 2021

